



**DESIGN & CONSTRUCTION GROUP  
THE GOVERNOR NELSON A. ROCKEFELLER  
EMPIRE STATE PLAZA  
ALBANY, NY 12242**

---

**ADDENDUM NO. 1 TO PROJECT NO. Q2019**

**CONSTRUCTION, HVAC, AND ELECTRICAL WORK  
REPLACE ROOFTOP AIR HANDLERS, ACCESSORY EQUIPMENT, &  
ASSOCIATED CONTROLS  
DMNA HEADQUARTERS  
330 OLD NISKAYUNA RD  
LATHAM, NY**

May 27, 2026

**NOTE:** This Addendum forms a part of the Contract Documents. Insert it in the Project Manual. Acknowledge receipt of this Addendum in the space provided on the Bid Form.

**HVAC WORK SPECIFICATIONS**

1. SECTION 055000 METAL FABRICATIONS: Discard the Section bound in the Project Manual and substitute the accompanying Section (pages 055000 – 1 thru 055000 – 7) noted “Revised 5/26/2026”.

**HVAC WORK DRAWINGS**

2. Revised Drawings:
  - a. Drawing Nos. M-001.1, M-301.1, M-302.1, M-601.1, M-001.3, M-301.3, and M-601.3, noted Revised Drawing dated 5/26/2026, accompany this Addendum and supersede the same numbered previously issued drawings.

**END OF ADDENDUM**

Brady M. Sherlock, P.E.  
Director, Division of Design  
Design & Construction

## SECTION 055000 - METAL FABRICATIONS

### PART 1 - GENERAL

#### 1.1 SUMMARY

##### A. Section Includes:

1. Steel framing and supports for mechanical equipment.
2. Steel framing and supports for applications where framing and supports are not specified in other Sections.
3. Slotted channel framing.

#### 1.2 COORDINATION

- A. Coordinate selection of shop primers with topcoats to be applied over them. Comply with paint and coating manufacturers' written instructions to ensure that shop primers and topcoats are compatible with one another.
- B. Coordinate installation of metal fabrications that are anchored to or that receive other work. Furnish setting drawings, templates, and directions for installing anchorages, including sleeves, concrete inserts, anchor bolts, and items with integral anchors, that are to be embedded in concrete or masonry. Deliver such items to Project site in time for installation.

#### 1.3 SUBMITTALS

- A. Submittals for this section are subject to the re-evaluation fee identified in Article 4 of the General Conditions.
- B. Manufacturer's installation instructions shall be provided along with product data.
- C. Submittals shall be provided in the order in which they are specified and tabbed (for combined submittals).
- D. Product Data: For the following:
  1. Fasteners.
  2. Shop primers.
  3. Shrinkage-resisting grout.
  4. Slotted channel framing.
- E. Submit an Environmental Product Declaration (EPD) from the manufacturer for structural steel and slotted channel framing within this specification section, if available. A statement of the contractor's good faith effort to obtain the EPD shall be provided if not available.

1. Manufacturer-provided EPDs must be Product Specific Type III (Third-Party Reviewed), in adherence with ISO 14025 *Environmental labels and declarations*, ISO 14044 *Environmental management – Life cycle assessment*, and ISO 21930 *Core rules for environmental product declarations of construction products and services*.
- F. Shop Drawings: Show fabrication and installation details. Include plans, elevations, sections, and details of metal fabrications and their connections. Show anchorage and accessory items. Provide Shop Drawings for the following:
1. Steel framing and supports for mechanical equipment.
  2. Steel framing and supports for applications where framing and supports are not specified in other Sections.
- G. Qualification Data: For professional engineer's experience with providing delegated-design engineering services of the kind indicated, including documentation that engineer is licensed and registered in New York State.
- H. Paint Compatibility Certificates: From manufacturers of topcoats applied over shop primers, certifying that shop primers are compatible with topcoats.
- I. Research Reports: For post-installed anchors.
- J. Source quality-control reports.
1. Documentation to confirm compliance with General Conditions Article 25.4 Domestic Steel.

#### 1.4 QUALITY ASSURANCE

- A. If the value of the contract exceeds \$100,000 all structural steel, reinforcing steel and other major steel items to be incorporated in the Work of this Contract shall be produced and made in whole or substantial part in the United States, its territories or possessions.

#### 1.5 FIELD CONDITIONS

- A. Field Measurements: Verify actual locations of walls, floor slabs, decks, and other construction contiguous with metal fabrications by field measurements before fabrication.

### PART 2 - PRODUCTS

#### 2.1 METALS

- A. Metal Surfaces, General: Provide materials with smooth, flat surfaces unless otherwise indicated. For metal fabrications exposed to view in the completed Work, provide materials without seam marks, roller marks, rolled trade names, or blemishes.
1. Stainless Steel, General: Provide Type 316L for all exterior applications and where indicated.

- B. Structural Steel Plates, Shapes, and Bars: ASTM A36.
- C. Structural Steel Tubing: ASTM A500, cold-formed steel tubing.
- D. Structural Steel Pipe: ASTM A53, Standard Weight (Schedule 40) unless otherwise indicated.
- E. Slotted Channel Framing: Cold-formed metal box channels (struts) complying with MFMA-4.
  - 1. Size of Channels: 1-5/8 by 1-5/8 inches.
  - 2. Material: Galvanized steel, ASTM A653, commercial steel, Type B, with G90 coating; 0.079-inch nominal thickness.

## 2.2 FASTENERS

- A. General: Unless otherwise indicated, provide Type 304 stainless steel fasteners for exterior use and zinc-plated fasteners with coating complying with ASTM B633 or ASTM F1941, Class Fe/Zn 5, at exterior walls. Select fasteners for type, grade, and class required.
- B. Steel Bolts and Nuts: Regular hexagon-head bolts, ASTM A307, Grade A; with hex nuts, ASTM A563; and, where indicated, flat washers.
- C. High-Strength Bolts, Nuts, and Washers: ASTM F3125, Grade A325 or A440 as noted, Type 3, heavy-hex steel structural bolts; ASTM A563, Grade DH3, heavy-hex carbon-steel nuts; and where indicated, flat washers.
- D. Stainless Steel Bolts and Nuts: Regular hexagon-head annealed stainless steel bolts, ASTM F593; with hex nuts, ASTM F594; and, where indicated, flat washers; Alloy Group 1.
- E. Anchor Bolts: ASTM F1554, Grade 36 or as noted, of dimensions indicated; with nuts, ASTM A563; and, where indicated, flat washers.
  - 1. Hot-dip galvanize or provide mechanically deposited, zinc coating where item being fastened is indicated to be galvanized.
- F. Anchors, General: Capable of sustaining, without failure, a load equal to six times the load imposed when installed in unit masonry and four times the load imposed when installed in concrete, as determined by testing in accordance with ASTM E488, conducted by a qualified independent testing agency.
- G. Post-Installed Anchors: Torque-controlled expansion anchors or chemical anchors.
  - 1. Material for Interior Locations: Carbon-steel components zinc plated to comply with ASTM B633 or ASTM F1941, Class Fe/Zn 5, unless otherwise indicated.
  - 2. Material for Interior Locations Where Stainless Steel Is Indicated: Alloy Group 1 stainless steel bolts, ASTM F593, and nuts, ASTM F594.
  - 3. Material for Exterior Locations: Alloy Group 2 stainless-steel bolts, ASTM F593, and nuts, ASTM F594.

## 2.3 MISCELLANEOUS MATERIALS

- A. Universal Shop Primer: Fast-curing, lead- and chromate-free, universal modified-alkyd primer complying with MPI#79 and compatible with topcoat.
  - 1. Use primer containing pigments that make it easily distinguishable from zinc-rich primer.
- B. Shop Primer for Galvanized Steel: Primer formulated for exterior use over zinc-coated metal and compatible with finish paint systems indicated.
- C. Galvanizing Repair Paint: High-zinc-dust-content paint complying with SSPC-Paint 20 and compatible with paints specified to be used over it.

## 2.4 FABRICATION, GENERAL

- A. Shop Assembly: Preassemble items in the shop to greatest extent possible. Disassemble units only as necessary for shipping and handling limitations. Use connections that maintain structural value of joined pieces. Clearly mark units for reassembly and coordinated installation.
- B. Cut, drill, and punch metals cleanly and accurately. Remove burrs and ease edges to a radius of approximately 1/32 inch unless otherwise indicated. Remove sharp or rough areas on exposed surfaces.
- C. Form bent-metal corners to smallest radius possible without causing grain separation or otherwise impairing work.
- D. Form exposed work with accurate angles and surfaces and straight edges.
- E. Weld corners and seams continuously to comply with the following:
  - 1. Use materials and methods that minimize distortion and develop strength and corrosion resistance of base metals.
  - 2. Obtain fusion without undercut or overlap.
  - 3. Remove welding flux immediately.
  - 4. At exposed connections, finish exposed welds and surfaces smooth and blended so no roughness shows after finishing and contour of welded surface matches that of adjacent surface.
- F. Form exposed connections with hairline joints, flush and smooth, using concealed fasteners or welds where possible. Where exposed fasteners are required, use Phillips flat-head (countersunk) fasteners unless otherwise indicated. Locate joints where least conspicuous.
- G. Fabricate seams and other connections that are exposed to weather in a manner to exclude water. Provide weep holes where water may accumulate.
- H. Cut, reinforce, drill, and tap metal fabrications as indicated to receive finish hardware, screws, and similar items.
- I. Provide for anchorage of type indicated; coordinate with supporting structure. Space anchoring devices to secure metal fabrications rigidly in place and to support indicated loads.

- J. Where units are indicated to be cast into concrete or built into masonry, equip with integrally welded steel strap anchors, 1/8 by 1-1/2 inches, with a minimum 6-inch embedment and 2-inch hook, not less than 8 inches from ends and corners of units and 24 inches o.c., unless otherwise indicated.

## 2.5 MISCELLANEOUS FRAMING AND SUPPORTS

- A. General: Provide steel framing and supports not specified in other Sections as needed to complete the Work.
- B. Fabricate units from steel shapes, plates, and bars of welded construction unless otherwise indicated. Fabricate to sizes, shapes, and profiles indicated and as necessary to receive adjacent construction.
  - 1. Fabricate units from slotted channel framing where indicated.
  - 2. Furnish inserts for units installed after concrete is placed.
- C. Prime miscellaneous framing and supports with zinc-rich primer where indicated.

## 2.6 STEEL WELD PLATES AND ANGLES

- A. Provide steel weld plates and angles not specified in other Sections, for items supported from concrete construction as needed to complete the Work. Provide each unit with no fewer than two integrally welded steel anchors for embedding in concrete.

## 2.7 GENERAL FINISH REQUIREMENTS

- A. Finish metal fabrications after assembly.
- B. Finish exposed surfaces to remove tool and die marks and stretch lines, and to blend into surrounding surface.

## 2.8 STEEL AND IRON FINISHES

- A. Galvanizing: Hot-dip galvanize items as indicated to comply with ASTM A153 for steel and iron hardware and with ASTM A123 for other steel and iron products.
  - 1. Do not quench or apply post galvanizing treatments that might interfere with paint adhesion.
- B. Preparation for Shop Priming Galvanized Items: After galvanizing, thoroughly clean galvanized surfaces of grease, dirt, oil, flux, and other foreign matter, and treat with metallic phosphate process.
- C. Shop prime iron and steel items not indicated to be galvanized unless they are to be embedded in concrete, sprayed-on fireproofing, or masonry, or unless otherwise indicated.

- D. Preparation for Shop Priming: Prepare surfaces to comply with requirements indicated below:
  - 1. Exterior Items: SSPC-SP 6/NACE No. 3, "Commercial Blast Cleaning."
  - 2. Items Indicated to Receive Zinc-Rich Primer: SSPC-SP 6/NACE No. 3, "Commercial Blast Cleaning."
  - 3. Other Steel Items: SSPC-SP 3, "Power Tool Cleaning."
  - 4. Galvanized-Steel Items: SSPC-SP 16, "Brush-off Blast Cleaning of Coated and Uncoated Galvanized Steel, Stainless Steels, and Non-Ferrous Metals."
- E. Shop Priming: Apply shop primer to comply with SSPC-PA 1, "Paint Application Specification No. 1: Shop, Field, and Maintenance Painting of Steel," for shop painting.

## PART 3 - EXECUTION

### 3.1 INSTALLATION, GENERAL

- A. Cutting, Fitting, and Placement: Perform cutting, drilling, and fitting required for installing metal fabrications. Set metal fabrications accurately in location, alignment, and elevation; with edges and surfaces level, plumb, true, and free of rack; and measured from established lines and levels.
- B. Fit exposed connections accurately together to form hairline joints. Weld connections that are not to be left as exposed joints but cannot be shop welded because of shipping size limitations. Do not weld, cut, or abrade surfaces of exterior units that have been hot-dip galvanized after fabrication and are for bolted or screwed field connections.
- C. Fastening to In-Place Construction: Provide anchorage devices and fasteners where metal fabrications are required to be fastened to in-place construction. Provide threaded fasteners for use with concrete and masonry inserts, toggle bolts, through bolts, lag screws, wood screws, and other connectors.
- D. Provide temporary bracing or anchors in formwork for items that are to be built into concrete, masonry, or similar construction.
- E. Corrosion Protection: Coat concealed surfaces of aluminum that come into contact with grout, concrete, masonry, wood, or dissimilar metals with the following:
  - 1. Cast Aluminum: Heavy coat of bituminous paint.
  - 2. Extruded Aluminum: Two coats of clear lacquer.

### 3.2 INSTALLATION OF MISCELLANEOUS FRAMING AND SUPPORTS

- A. General: Install framing and supports to comply with requirements of items being supported, including manufacturers' written instructions and requirements indicated on Shop Drawings.
- B. Anchor supports securely to, and rigidly brace from, building structure.

### 3.3 REPAIRS

#### A. Touchup Painting:

1. Immediately after erection, clean field welds, bolted connections, and abraded areas. Paint uncoated and abraded areas with same material as used for shop painting to comply with SSPC-PA 1 for touching up shop-painted surfaces.
  - a. Apply by brush or spray to provide a minimum 2.0-mil dry film thickness.

#### B. Galvanized Surfaces: Clean field welds, bolted connections, and abraded areas and repair galvanizing to comply with ASTM A780.

END OF SECTION 055000



**GENERAL NOTES:**

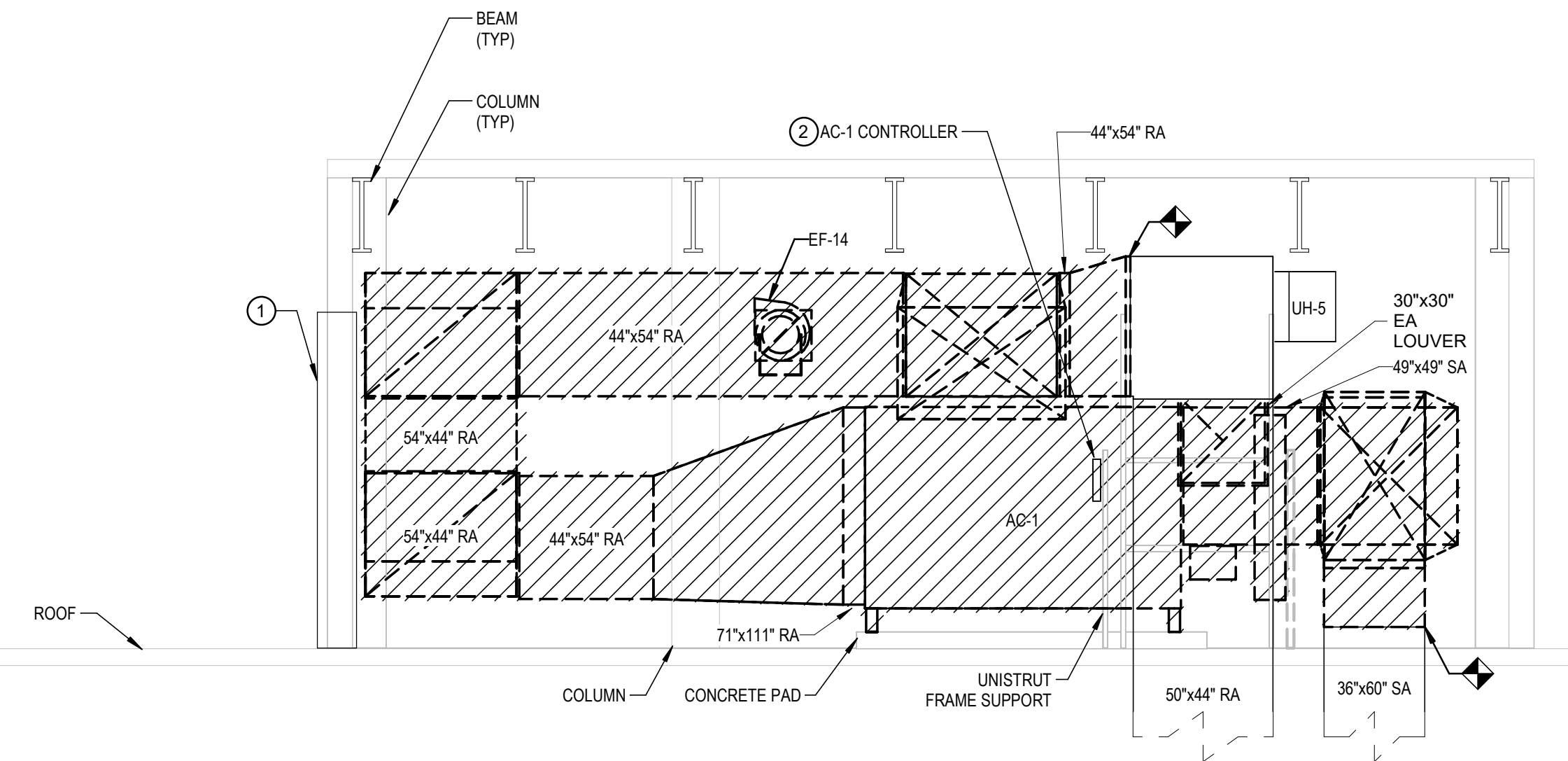
1. PROVIDE DOUBLE WIDTH TURNING VANES IN ALL RECTANGULAR DUCT ELBOWS PROVIDED IN THIS CONTRACT. REFER TO SPECIFICATION SECTION 233113 FOR CONSTRUCTION REQUIREMENTS.

**REMOVALS KEYED NOTES:**

1. WORK BY C-CONTRACT INCLUDES REMOVAL OF PORTION OF EXTERIOR WALL TO CREATE TEMPORARY OPENING FOR REMOVAL AND INGRESS OF MATERIALS AND EQUIPMENT.
2. REMOVE TRANE CONTROLLER.

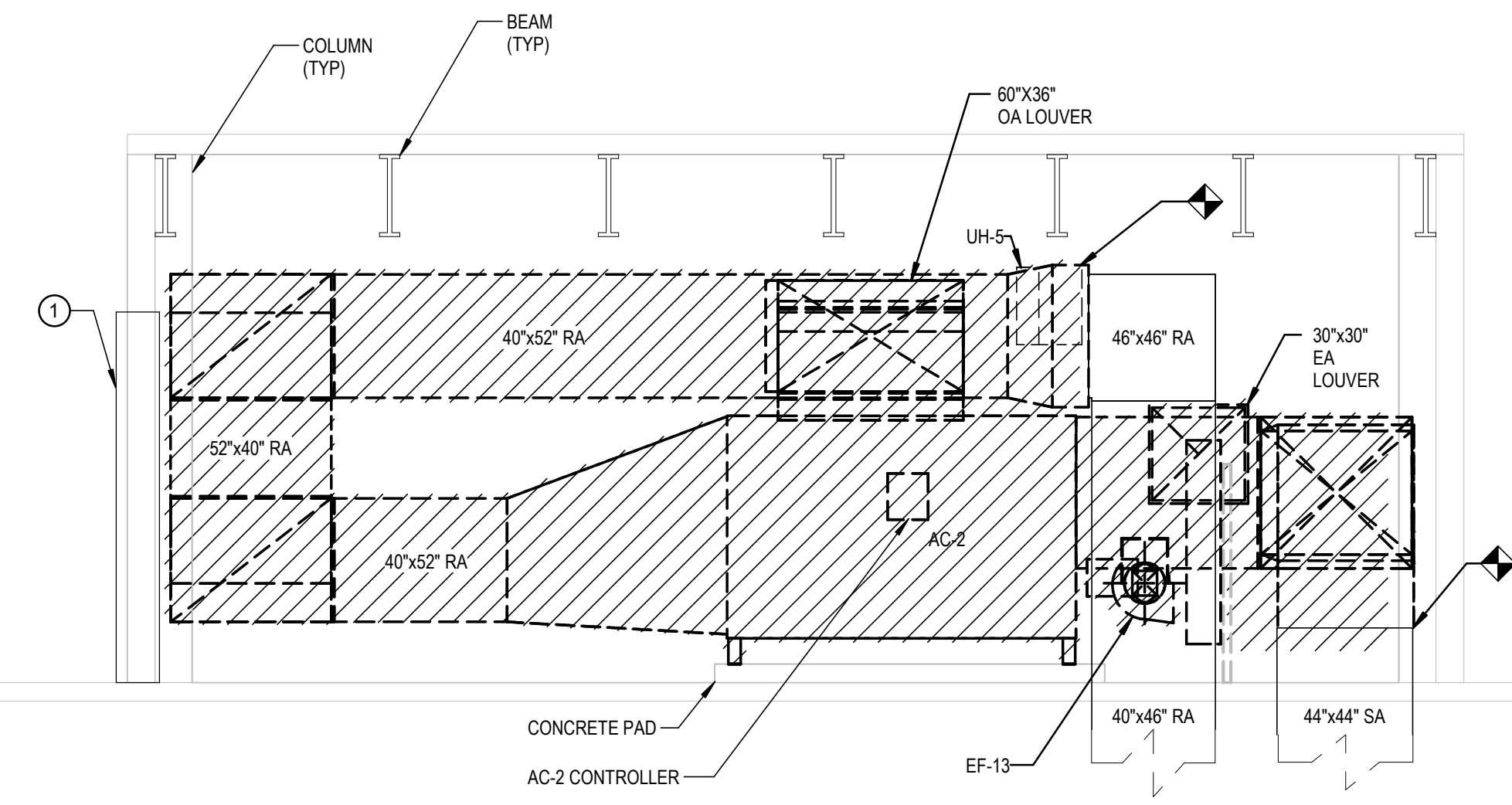
**INSTALLATION KEYED NOTES:**

1. WORK BY C-CONTRACT INCLUDES RECONSTRUCTION OF EXTERIOR WALL AFTER EQUIPMENT IS IN PLACE.
2. PROVIDE AC-1 AND AC-2 TRANE CONTROLLER.
3. PROVIDE MOTORIZED DAMPERS.
4. FURNISH LOUVER FOR INSTALLATION BY C-CONTRACT.
5. PRE-FABRICATED NON-FIBROUS OUTDOOR RECTANGULAR DUCTWORK PER SPECIFICATION SECTION 233113.



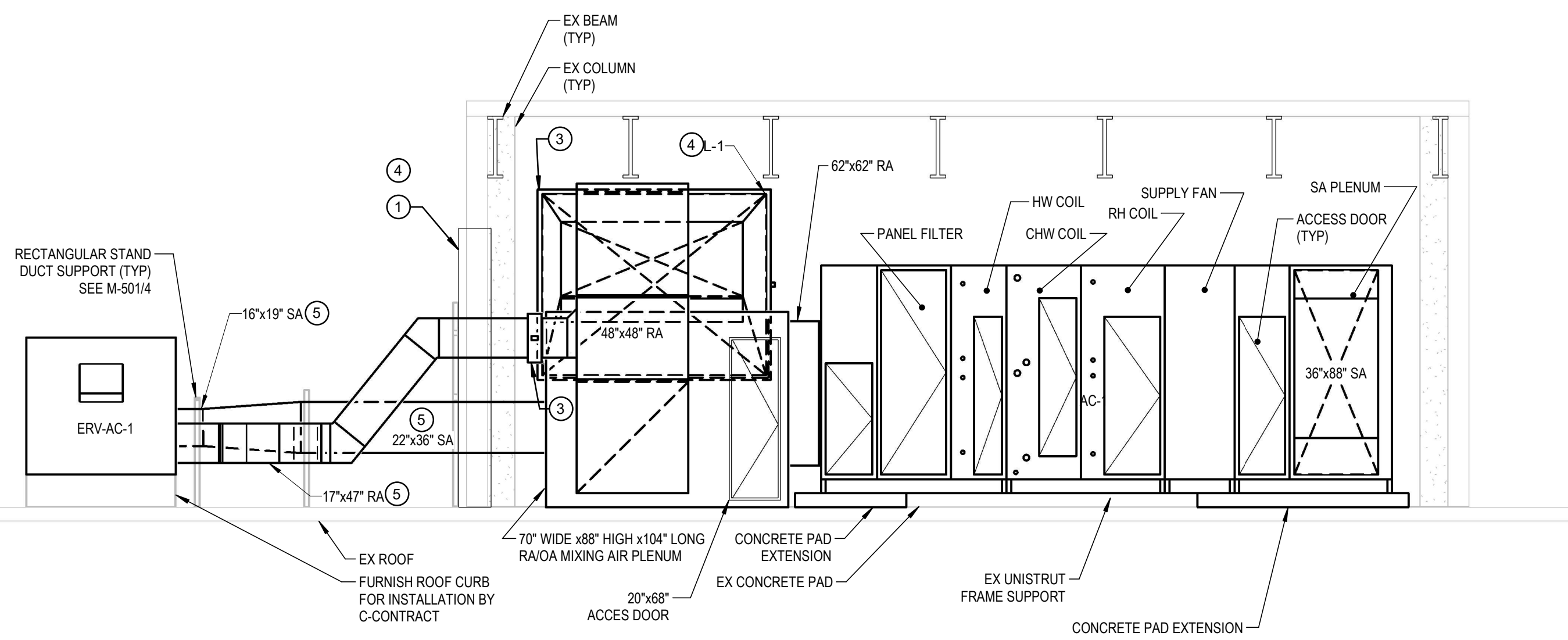
**1 AC-1 REMOVALS SECTION VIEW**

M-301.1 1/4" = 1'-0"



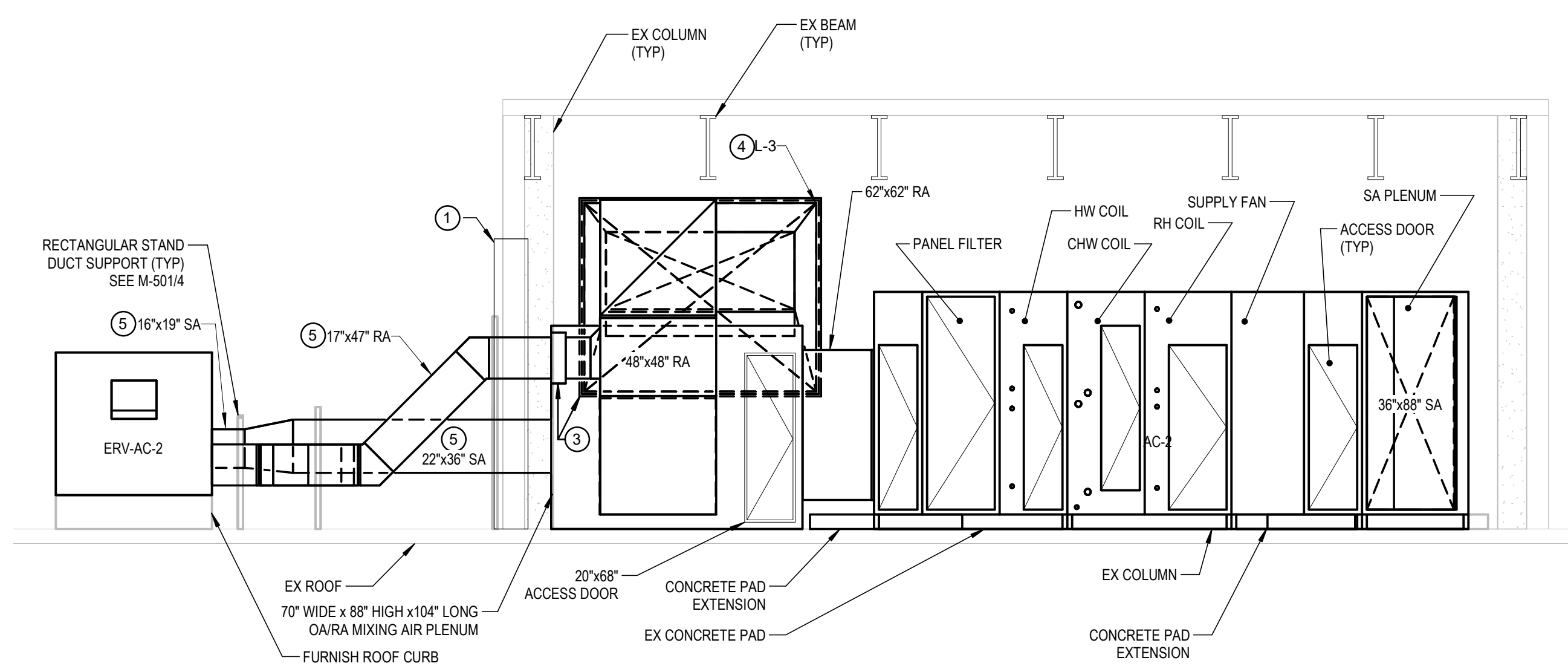
**2 AC-2 REMOVALS SECTION VIEW**

M-301.1 1/4" = 1'-0"



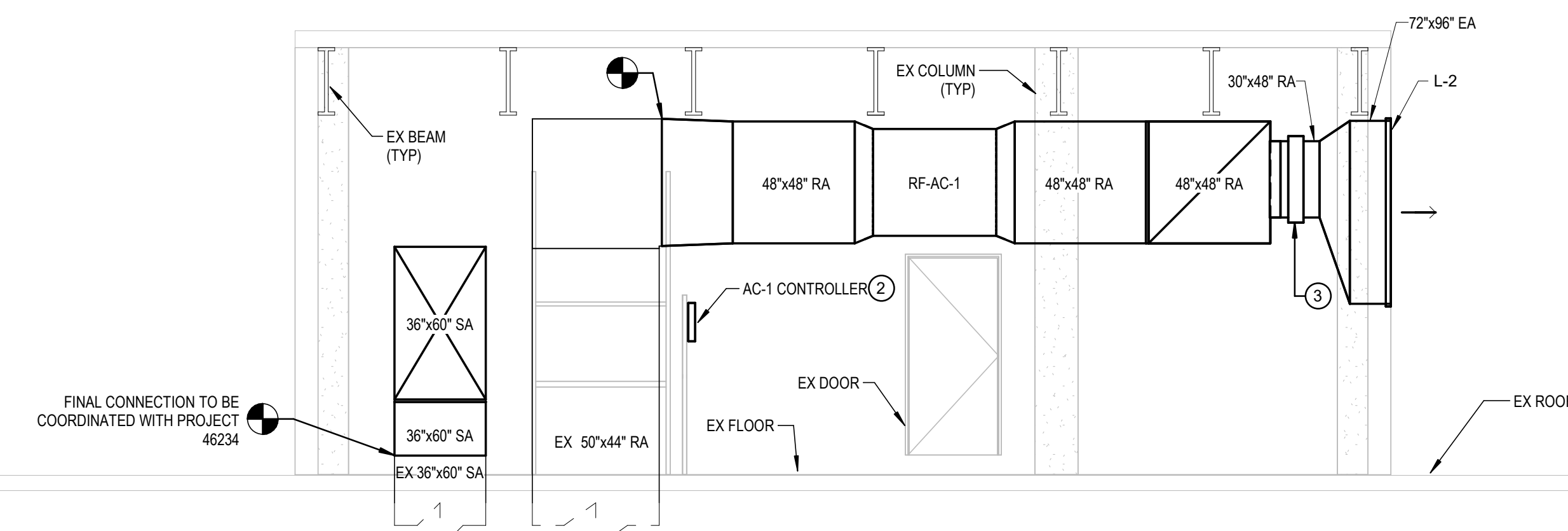
**3 AC-1 INSTALLATION SECTION VIEW**

M-301.1 1/4" = 1'-0"



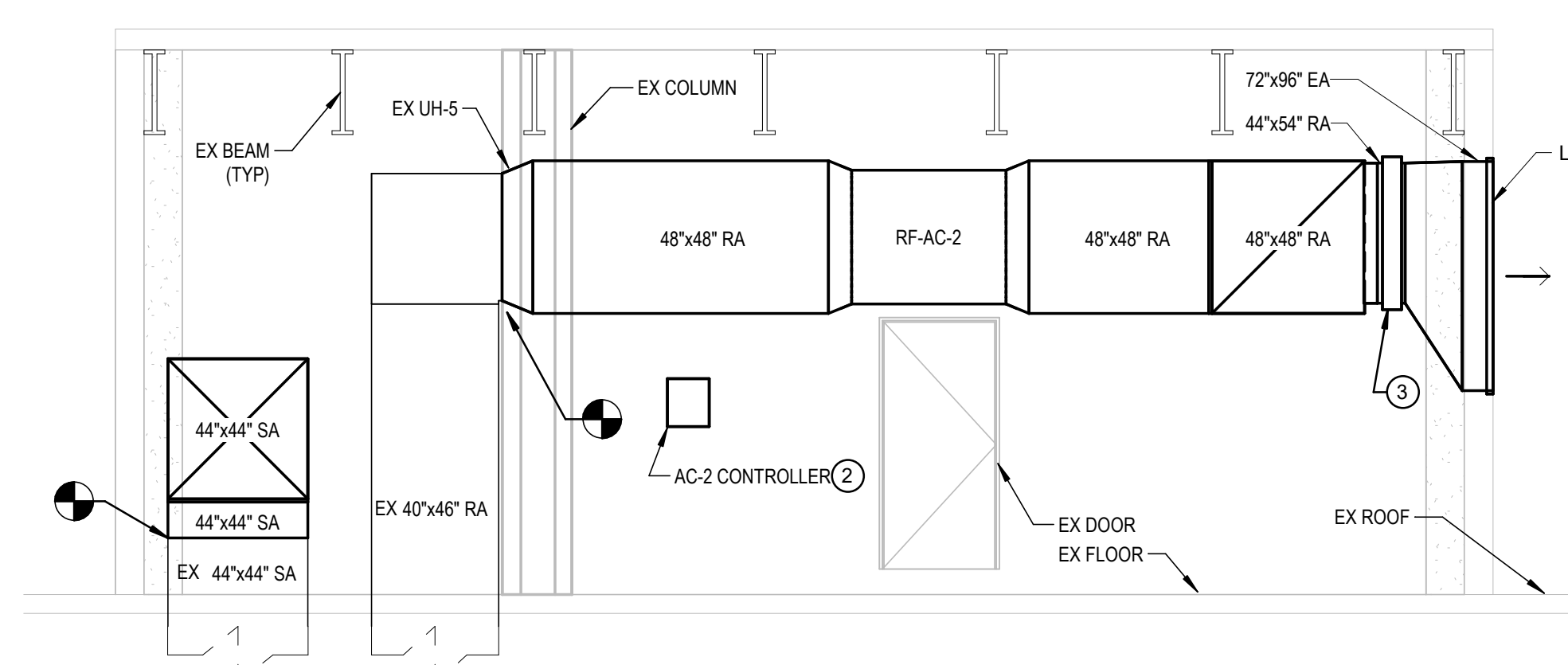
**4 AC-2 INSTALLATION SECTION VIEW**

M-301.1 1/4" = 1'-0"



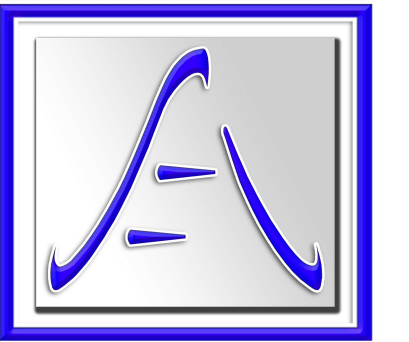
**5 RF-AC-1 INSTALLATION SECTION VIEW**

M-301.1 1/4" = 1'-0"



**6 RF-AC-2 INSTALLATION SECTION VIEW**

M-301.1 1/4" = 1'-0"



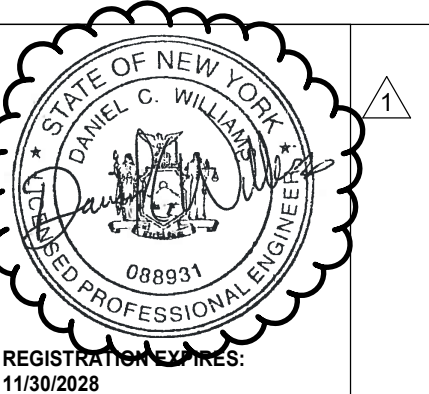
**SAGE ENGINEERING ASSOCIATES, LLP**

TO THE BEST OF THE ENGINEER'S KNOWLEDGE, BELIEF AND PROFESSIONAL JUDGEMENT, THESE PLANS AND/OR SPECIFICATION ARE IN COMPLIANCE WITH THE 2025 ENERGY CONSTRUCTION CODE OF NEW YORK STATE.

TO THE BEST OF THE ENGINEER'S KNOWLEDGE, BELIEF AND PROFESSIONAL JUDGEMENT, THESE PLANS AND/OR SPECIFICATION ARE IN COMPLIANCE WITH THE 2025 BUILDING CODE OF NEW YORK STATE.

**WARNING:**

THE ALTERATION OF THIS MATERIAL IN ANY WAY, UNLESS DONE UNDER THE DIRECTION OF A COMPARABLE PROFESSIONAL, I.E. ARCHITECT FOR AN ARCHITECT, ENGINEER FOR AN ENGINEER OR LANDSCAPE ARCHITECT FOR A LANDSCAPE ARCHITECT, IS A VIOLATION OF THE NEW YORK STATE EDUCATION LAW AND/OR REGULATIONS AND IS A CLASS "A" MISDEMEANOR.



**CONTRACT:**

**HVAC**

**TITLE:**  
REPLACE ROOF TOP AIR HANDLERS, ACCESSORY EQUIPMENT & ASSOCIATED CONTROLS

**LOCATION:**  
DMNA HEADQUARTERS  
330 OLD NISKAYUNA ROAD  
LATHAM, NY

**CLIENT:**  
NEW YORK STATE DIVISION OF MILITARY AND NAVAL AFFAIRS

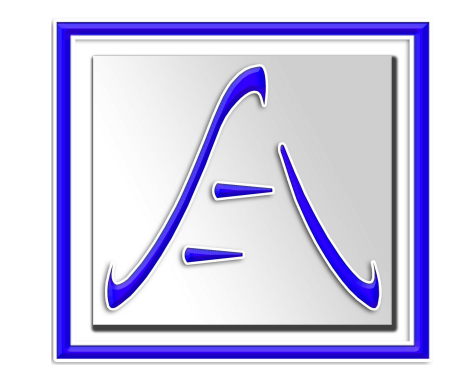
MARK	DATE	DESCRIPTION
1	05/26/2026	REVISED DRAWING
	04/29/2026	BID DOCUMENT
<b>PROJECT NUMBER: Q2019 - H</b>		
DESIGNED BY: DP		
DRAWN BY: DP		
FIELD CHECK: -		
APPROVED: DW		

**SHEET TITLE:**

**AC-1 & AC-2  
REMOVAL AND  
INSTALLATION  
SECTION VIEW**

**DRAWING NUMBER**

**M-301.1**

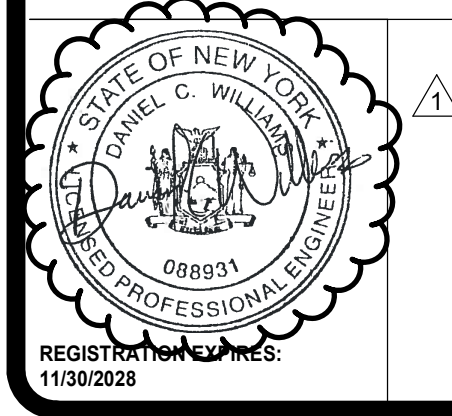


SAGE ENGINEERING ASSOCIATES, LLP

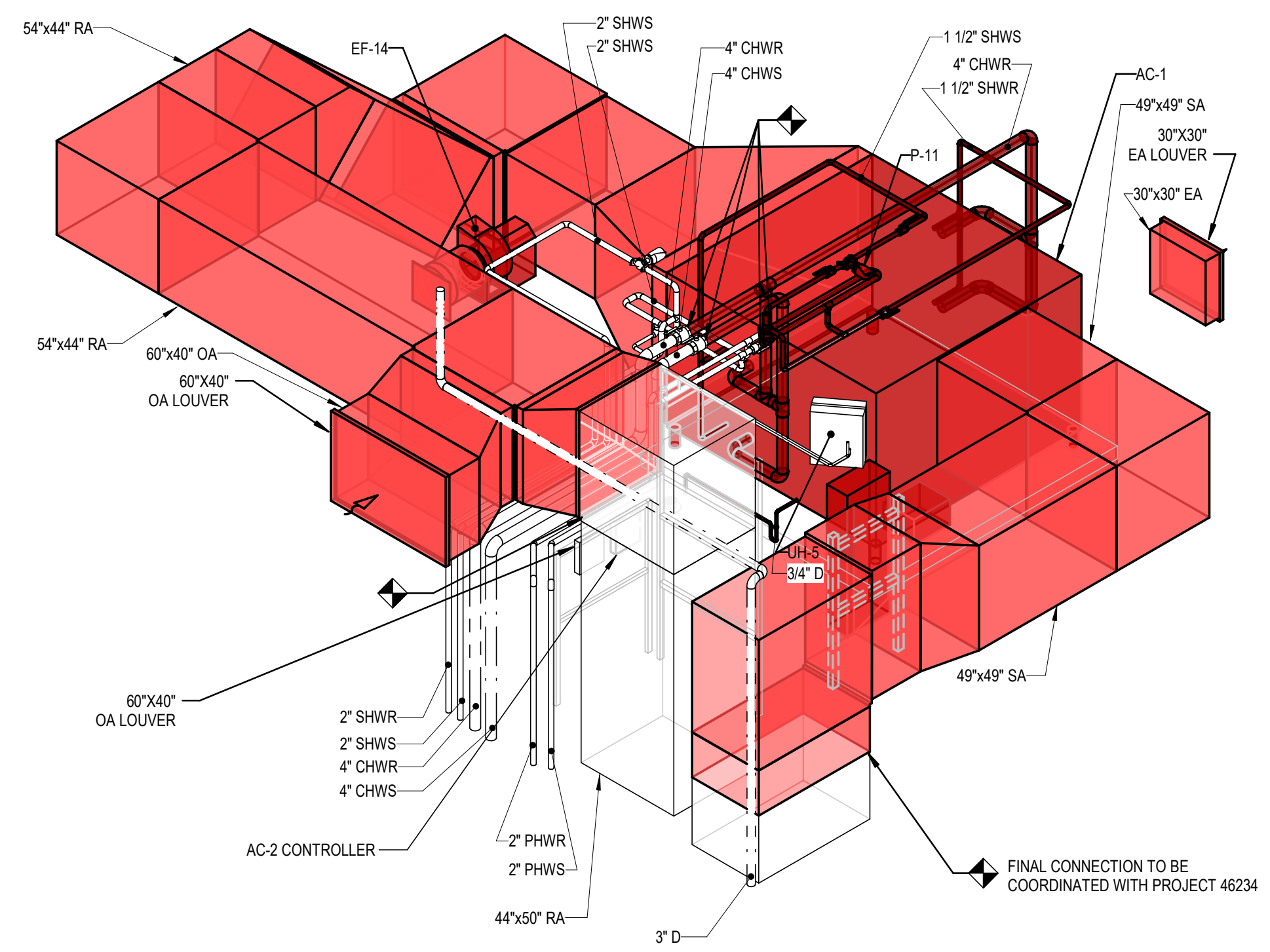
TO THE BEST OF THE ENGINEER'S KNOWLEDGE, BELIEF AND PROFESSIONAL JUDGEMENT, THESE PLANS AND/OR SPECIFICATION ARE IN COMPLIANCE WITH THE 2025 ENERGY CONSTRUCTION CODE OF NEW YORK STATE.

TO THE BEST OF THE ENGINEER'S KNOWLEDGE, BELIEF AND PROFESSIONAL JUDGEMENT, THESE PLANS AND/OR SPECIFICATION ARE IN COMPLIANCE WITH THE 2025 BUILDING CODE OF NEW YORK STATE.

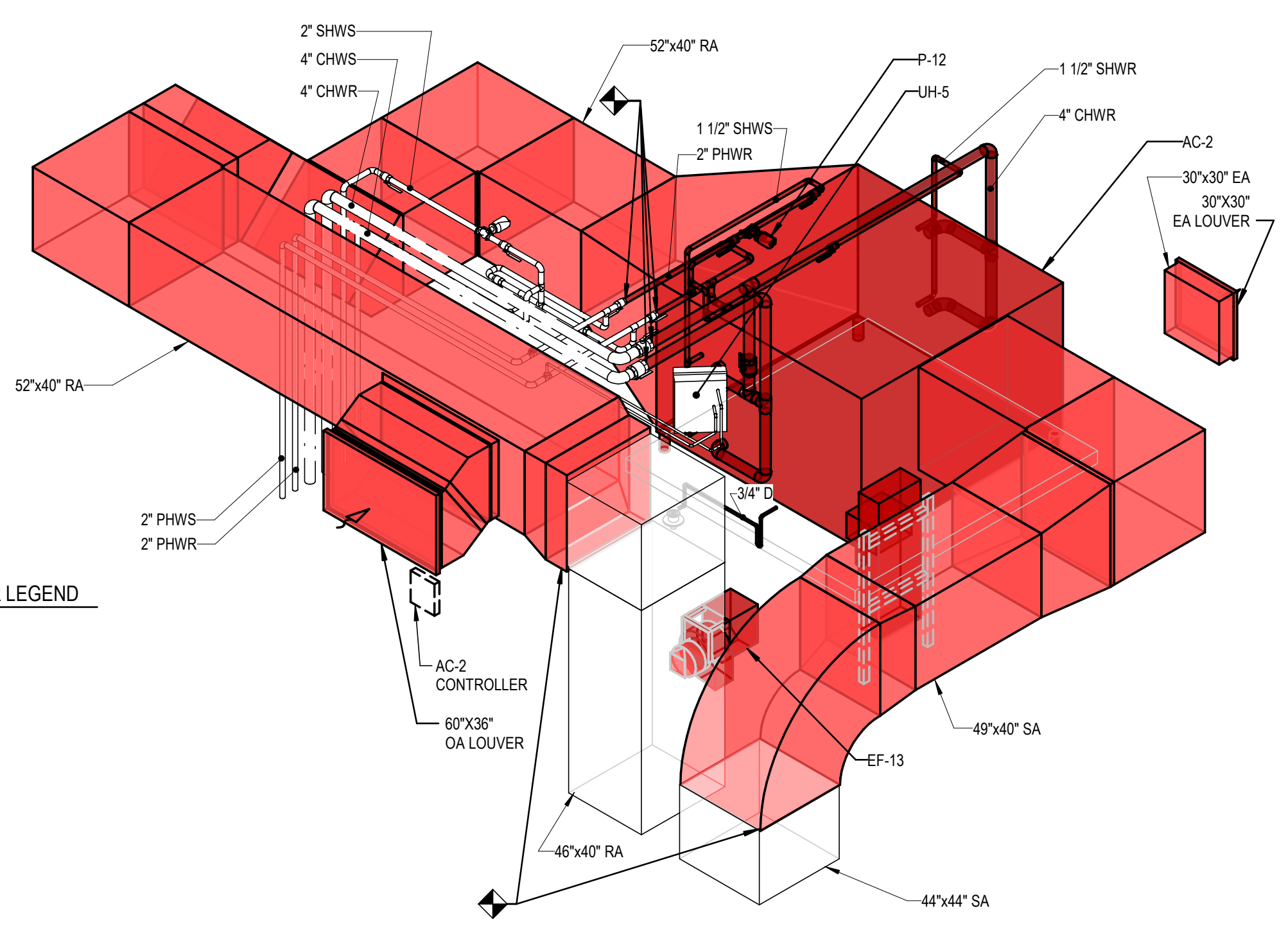
**WARNING:**  
THE ALTERATION OF THIS MATERIAL IN ANY WAY, UNLESS DONE UNDER THE DIRECTION OF A COMPARABLE PROFESSIONAL, I.E. ARCHITECT FOR AN ARCHITECT, ENGINEER FOR AN ENGINEER OR LANDSCAPE ARCHITECT FOR A LANDSCAPE ARCHITECT, IS A VIOLATION OF THE NEW YORK STATE EDUCATION LAW AND/OR REGULATIONS AND IS A CLASS 'A' MISDEMEANOR.



**GENERAL NOTES:**  
1. PROVIDE DOUBLE WIDTH TURNING VANES IN ALL RECTANGULAR DUCT ELBOWS PROVIDED IN THIS CONTRACT. REFER TO SPECIFICATION SECTION 233113 FOR CONSTRUCTION REQUIREMENTS.



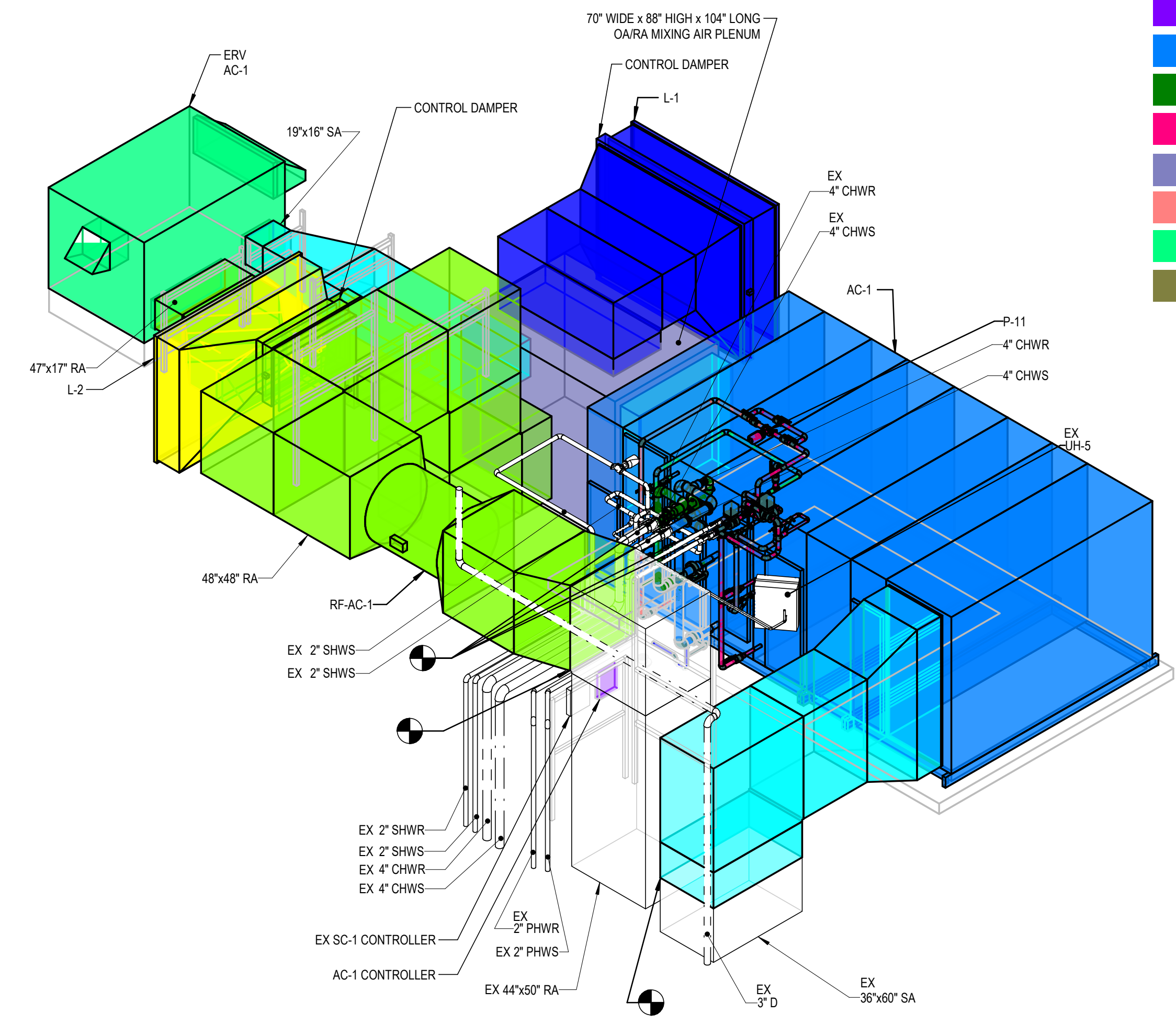
1 AC-1 REMOVALS ISOMETRIC VIEW  
M-302.1



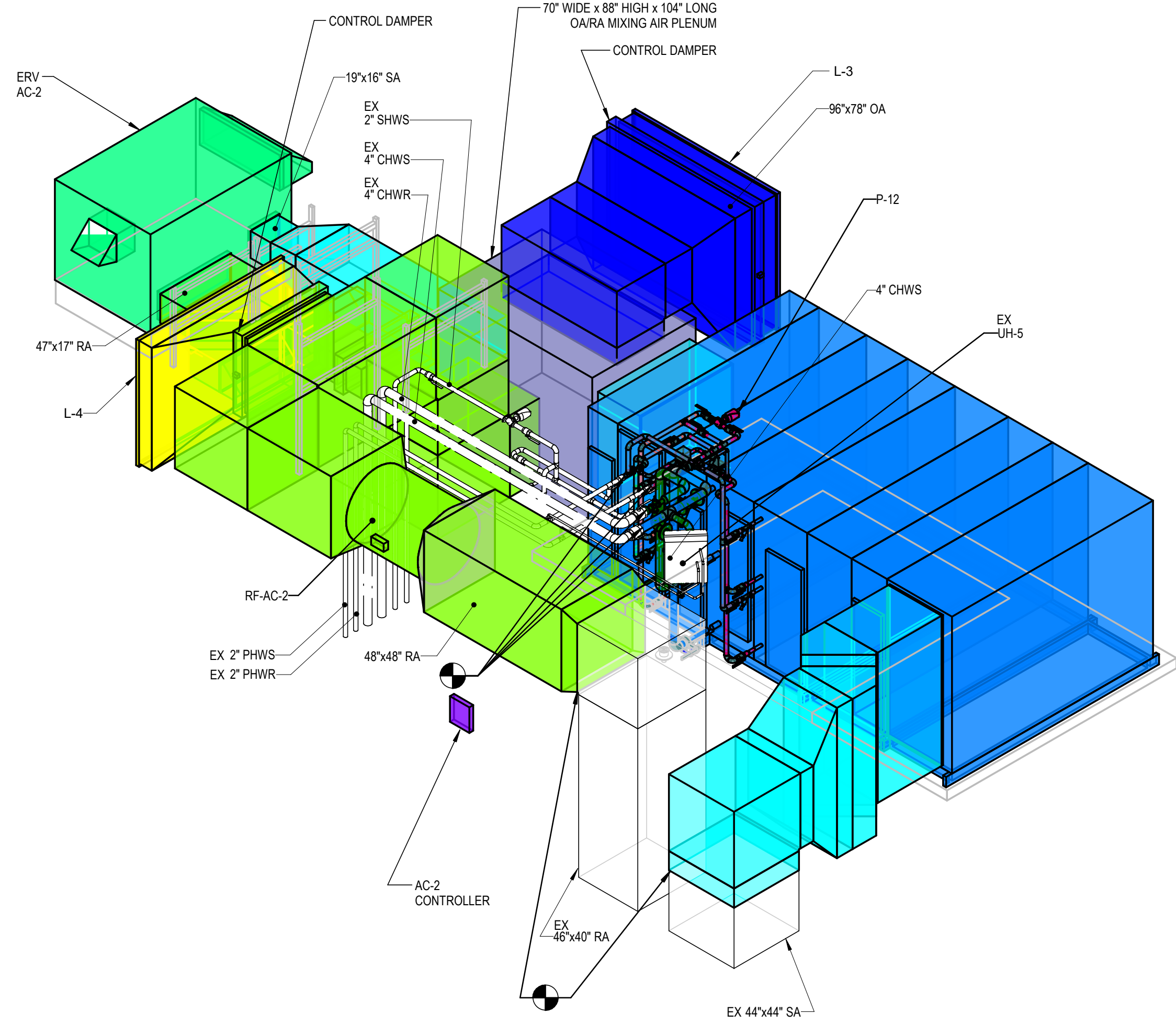
2 AC-2 REMOVALS ISOMETRIC VIEW  
M-302.1

**REMOVALS AND INSTALLATION COLOR LEGEND**

Red	EQUIPMENT REMOVALS
Light Red	DUCTWORK REMOVALS
Dark Red	PIPE REMOVALS
Blue	AHU
Green	ERV
Cyan	SA
Light Green	RA
Yellow	EA
Purple	CONTROLLER
Light Blue	CHWS
Dark Blue	CHWR
Pink	PHWS
Light Purple	PHWR
Light Cyan	SHWS
Light Green	SHWR
Brown	D



3 AC-1 INSTALLATION ISOMETRIC VIEW  
M-302.1



4 AC-2 INSTALLATION ISOMETRIC VIEW  
M-302.1

**CONTRACT:** HVAC  
**TITLE:** REPLACE ROOF TOP AIR HANDLERS, ACCESSORY EQUIPMENT & ASSOCIATED CONTROLS  
**LOCATION:** DMNA HEADQUARTERS 330 OLD NISKAYUNA ROAD LATHAM, NY  
**CLIENT:** NEW YORK STATE DIVISION OF MILITARY AND NAVAL AFFAIRS

MARK	DATE	DESCRIPTION
△	05/26/2026	REVISED DRAWING
	04/29/2026	BID DOCUMENT
<b>PROJECT NUMBER:</b>		<b>Q2019 - H</b>
<b>DESIGNED BY:</b>		DP
<b>DRAWN BY:</b>		DP
<b>FIELD CHECK:</b>		-
<b>APPROVED:</b>		DW
<b>SHEET TITLE:</b>		
<b>ISOMETRIC VIEWS</b>		
<b>DRAWING NUMBER:</b>		
<b>M-302.1</b>		
<b>SHEET 17 OF 38</b>		







